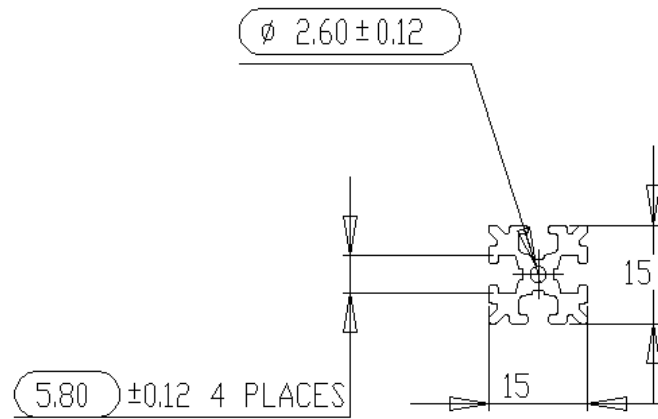


T-Slot Profile Specifications



| | |
|-----------------------------------|--|
| Dimensions: | 15x15mm width and height, length is variable (max. 1m) |
| Weight: | 0,306 gram per mm |
| Material: | aluminum, v2.0 6063-T5, black or clear anodised |
| Size of nuts & bolts: | various M3 bolts |
| Material nuts & bolts: | stainless steel |
| Brackets: | 90° T- and L- brackets corner cubes (aluminum) |
| Bracket material: | stainless steel, aluminum or plastic |



Product Range

- Beams: clear and black anodised
- Bearings
- NEMA17 brackets
- various M3 bolts (incl. DIN hexagonal)
- Wing type bolts (M3x6)
- and more...



Distributor in Germany

Visit:

<http://www.openbeam.de>

for a complete range of available products.

chartup.com supplies MakerBeam and OpenBeam elements and modules which make complex machine building easier and more effective.



System Engineering GmbH

Olchinger Str. 106b

Tel.: +49-8142-291-4489

82194 Gröbenzell

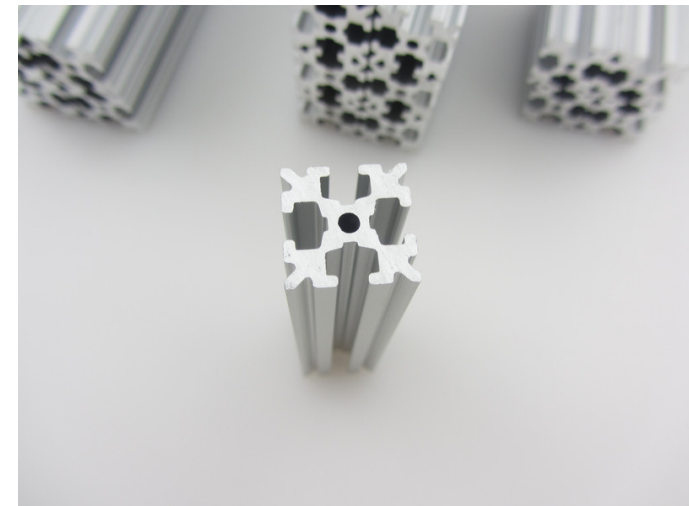
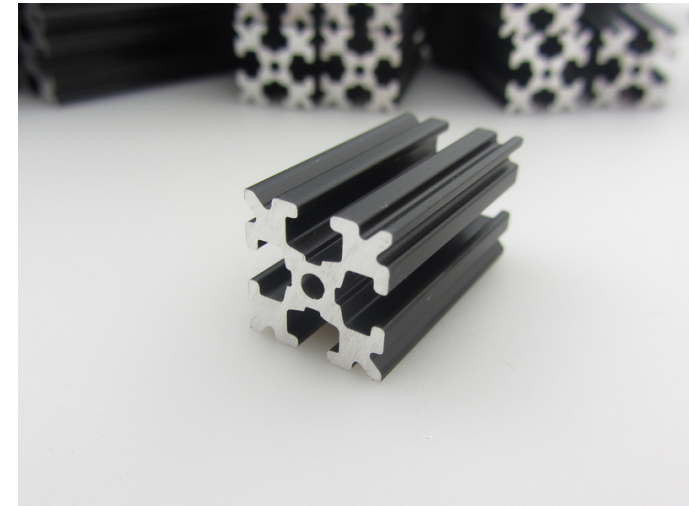
Fax: +49-8142-291-6368

<http://www.chartup.com>

OpenBeam

Midi-T-Slot Aluminum Beams

for
Endless Building Possibilities
in Miniature Size



<http://www.openbeam.de>

Rigid Miniature Size T-Slot Profiles

OpenBeam adopted T-slot technology to offer you precision components for endless building possibilities in miniature size. The 15mmx15mm profiles made of aluminum are very rigid making them suitable for a huge variety of applications. It is the strongest T-slot system that is even compatible with fischertechnik.

OpenBeam Starter Kit (black or clean anodized)



Beams:

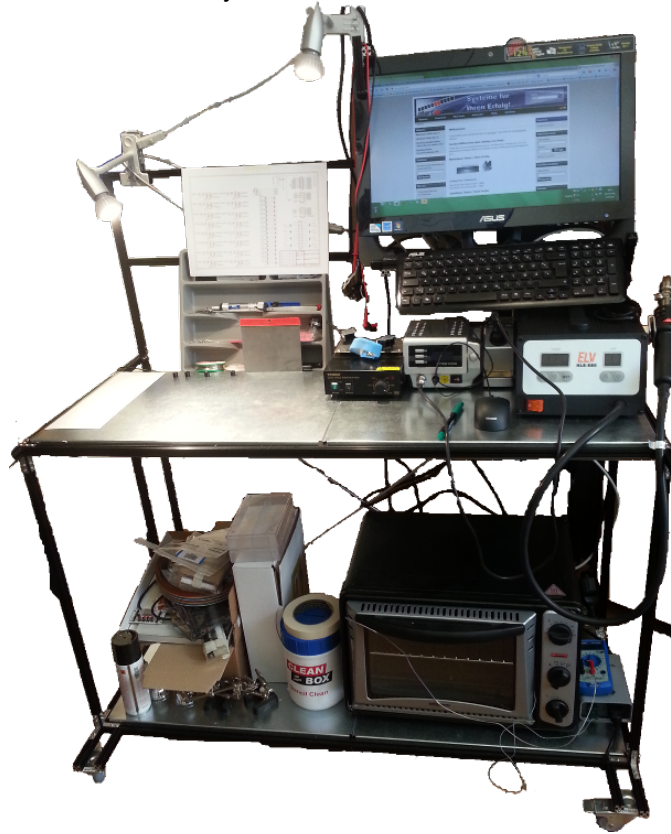
| | | | | |
|-------|------|------------------|--------|----------------|
| 300mm | (8x) | Bolts & Nuts: | nuts | (M3, 250 pcs.) |
| 270mm | (4x) | | | |
| 210mm | (4x) | | | |
| 150mm | (8x) | | | |
| 120mm | (4x) | | | |
| 90mm | (8x) | hexagon bolts | (M3x6, | 100 pcs.) |
| 60mm | (8x) | | | |
| 45mm | (4x) | | | |
| 30mm | (4x) | buttonhead bolts | (M3x6, | 100 pcs.) |
| | | | | |

Brackets:

| | | | | |
|------------|-------|--------|----------------|------|
| L-brackets | (12x) | Tools: | Hex nut driver | (1x) |
| T-brackets | (12x) | | | |
| feet | (8x) | | | |

Professional Prototyping

T-slot is a popular technology widely used for industrial automation and machine enclosures. The compatible elements simplify machine building and give you enormous flexibility.



The OpenBeam system offers precise and strong T-slot profiles to build robots and small machines. A wide variety of structural designs for machine and robotic frames is possible. The T-slot technology gives you the freedom to both integrate mechanical and electronic components.

Prototyping also becomes easier using OpenBeam. No more improvised structures when you want to integrate various components into one machine.

OpenBeam uses standard elements like M3 nuts and bolts. Standoffs can bolt directly to the beams as well as motor mounts (NEMA17 or servos). Build a CNC machine, 3D printer or whatever you want to...



Advantages

- Compatible Components available
- Shorter design and assembly times.
- All elements can be combined.
- Threaded M3 connections make for safe and easy assembly and dismantling.
- All elements can be reused. No welding is needed.
- Low weight structure with high loading capacity.
- Aluminum profiles provide attractive design.
- Black anodised beams can be useful in photography.

